

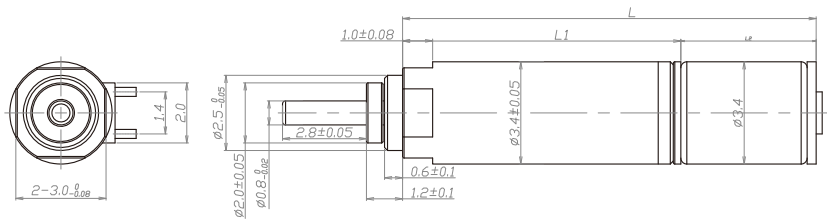
MD003003

齿轮箱规格 Gearbox Specifications

外径	Outer diameter	3mm	轴承	Bearing	含油轴承 Porous bearing
材质	Material	五金 Metal	轴向窜动	Axial endplay	≤0.3mm
旋转方向	Direction of rotation	cw & ccw	输出轴径向负载	Radial loading on output shaft	≤0.3N
齿轮箱回程差	Gear backlash	≤3°	工作温度	Operating temperature range	-20 ~ +85°C

齿轮级数 Gearbox Stages		1	2	3	4
减速比	Reduction ratio	5	25	125	625
最大容许扭力 (gf.cm)	Max rated torque of gearbox (gf.cm)	50	50	50	50
瞬间容许力矩 (gf.cm)	Instant torque of gearbox (gf.cm)	150	150	150	150
齿轮箱效率 (%)	Gearbox efficiency (%)	85	73	65	58
长度 (mm)	Gearbox length L1 (mm)	6	7.5	9	10.5

技术插图 | Technical Drawing



马达规格参数 Motor Specifications

马达	Motor type	步进电机 Stepper motor	输入速度	Input speed	≤10000rpm
电压	Voltage	3V	负载电流	Current	50mA max

型号 Model	Speed at 2400pps	Max Rated Torque	Max Instant Torque	Reduction Ratio	Gearbox Length	Overall Length
	2400pps频率转速 rpm	额定容许力矩 gf.cm	瞬间容许力矩 gf.cm		减速比	减速箱长 L1 mm
MD003003-5	1440.0	50	150	5	6.0	10.75
MD003003-25	288.0	50	150	25	7.5	12.25
MD003003-125	57.6	50	150	125	9.0	13.75
MD003003-625	11.5	50	150	625	10.5	15.25

注:可根据客户要求定制 Please contact us for customized products